

CIP rotary spray ball

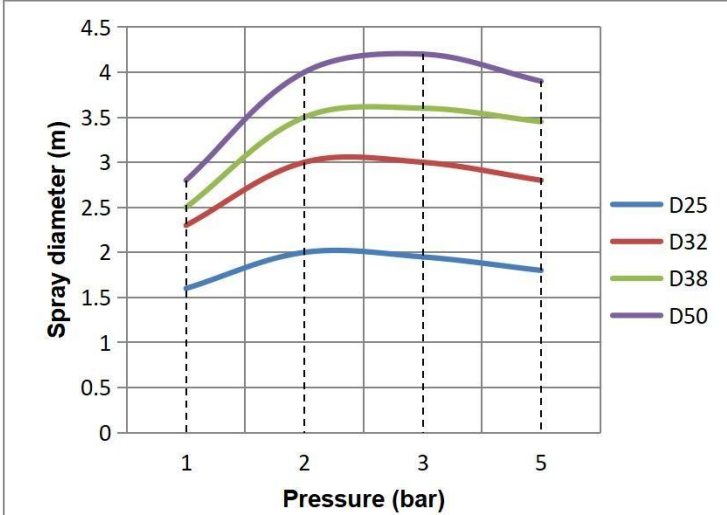
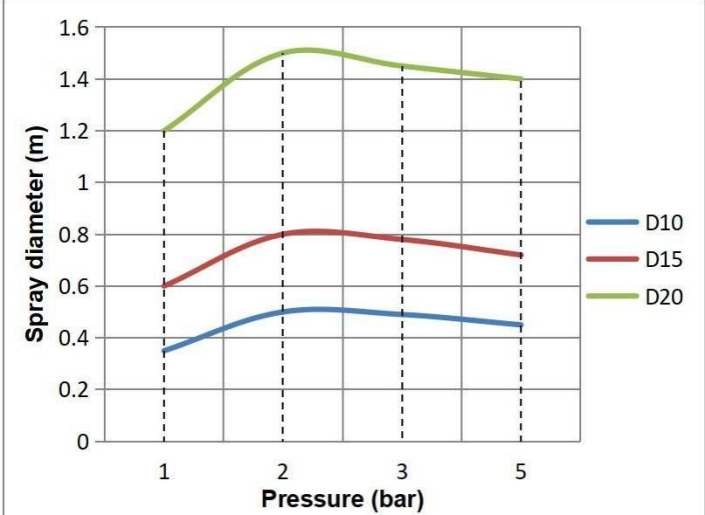
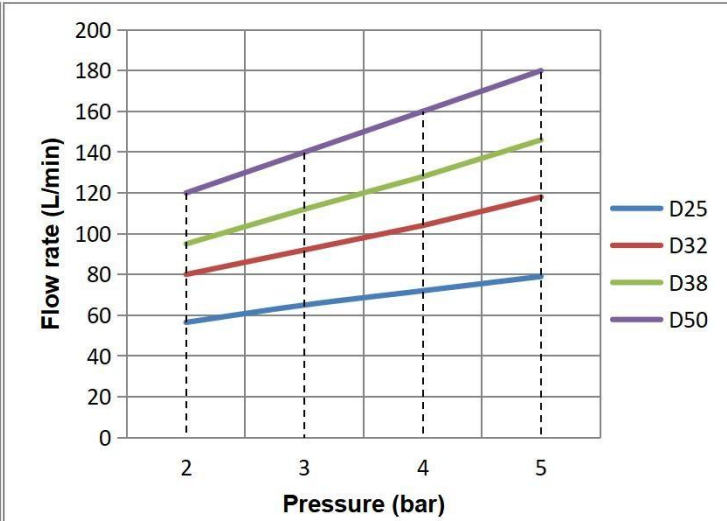
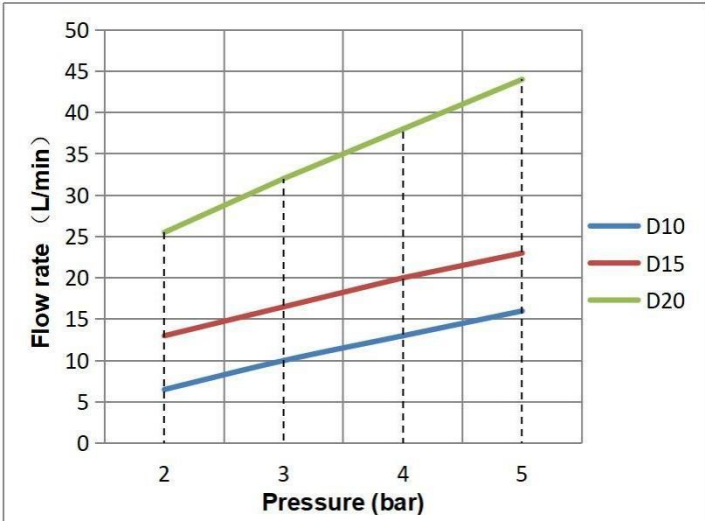
Design feature:

1. Double bearing design with excellent rotation effects, and better stability and longer service life
2. Self-cleaning self-lubricating design
3. 360 degree cleaning, cleaning every place in the tank
4. Low consumption of liquid, operating at low pressure
5. Driven and lubricated by the cleaning fluid
6. The compact and hygienic design meets requirements for use in CIP system

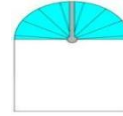
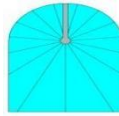
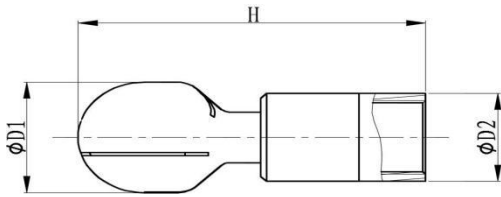


Performance data:

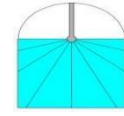
| | |
|-----------------------------|---|
| Material: | 316L SS |
| Spray angle: | 360°, 180° on request |
| Spray diameter: | see the table |
| Max. operating temperature: | 130° |
| Operating pressure: | 1.5-3 bar |
| Connection: | see the table |
| Installation: | operation in any direction is possible |
| Application: | for the rinsing and cleaning of vessels, tanks and machines e.g. in food industry, beverage industry, pharmaceutical industry or chemical industry |



Dimension



360°



180° Up

NPT thread or other connection size on request

| Model | Dimension | | | | Connection | | |
|-------|-----------|------|--------|--------------------|-----------------------|------------|--------------------|
| | D1 | D2 | H | Min. tank openings | FR-BSPP female thread | AR-welding | TF- slip-on |
| D10 | 10 | 9 | 38 | 10 | M6-FR | Φ8-AR | / |
| D15 | 17.5 | 14.5 | 53.5 | 17.5 | 1/8"-FR | 1/2"-AR | 1/2"-TF or 10mm-TF |
| D20 | 25 | 21 | 73 | 25 | 3/8"-FR | 1/2"-AR | 3/4"-TF |
| D25 | 32 | 26 | 94 | 32 | 1/2"-FR | 1"-AR | 3/4"-TF |
| D32 | 40 | 32 | 113.5 | 40 | 3/4"-FR | 1-1/4"-AR | 1"-TF |
| D38 | 45 | 39 | 137.06 | 45 | 3/4"-FR/1"-FR | 1-1/2"-AR | 1-1/4"-TF or 1"-TF |
| D50 | 64.5 | 59 | 154 | 64.5 | 1-1/2"-FR | 2"-AR | 1-1-2"-TF |

| POS | MODEL | MATERIAL | DIA.TANK | PRESSURE(BAR) | st. PRICE NOK |
|-----|-------|--------------|----------|---------------|---------------|
| 1 | D10 | SS316 1:4404 | 0,5 | 1-3 | 660 |
| 2 | D15 | SS316 1:4404 | 0,8 | 1,5-3 | 825 |
| 3 | D20 | SS316 1:4404 | 1,5 | 1,5-3 | 891 |
| 4 | D25 | SS316 1:4404 | 2 | 1,5-3 | 1056 |
| 5 | D32 | SS316 1:4404 | 3 | 1,5-3 | 1386 |
| 6 | D38 | SS316 1:4404 | 3,5 | 2-4 | 2145 |
| 7 | D50 | SS316 1:4404 | 4 | 2-4 | 2607 |

FORHANDLERAVTALE

Det gis en rabatt på 30% på oppgitte priser

Priser er å forstå som netto ex.mva.

Frakt : exw lager Brattvåg

Kvalitet og test: produktene er testet fabrikk, samt testet hos våre kunde i konkurranse
Med like produkter i markedet.